



SCOUTING REPORT



March 21, 1999
Philadelphia @ Portland
Ernie Woods



SIXERS OFFENSE

1. Execute a lot of half court offense, but are more effective in transition... would classify as a running team... have outscored opposition 226 (18.8 ppg) to 125 margin
2. Run out and push hard off turnovers and rebounds.
3. Mainly run Iverson off screens in set offense. Execute well, set hard screens and are unselfish.
4. Spread court with good spacing... will run Power, Hawk, Zipper, Elbows, Side Screen/Roll, Cross (base screen for post iso), and Boston sets. Designate side by up (right) and down (left).
5. Outside shooting is very suspect. Portland sagged off (zoned) Snow and push Iverson to middle very successfully.
6. Very active on offensive boards! Quick jumpers, will get third and fourth efforts.
7. Full court pressure took them out of the set offense in second half. Half court trap against 2 up (UCLA) was also very successful.

SIXERS DEFENSE

1. Play aggressive defense... one of the best in the NBA... Iverson quick hands outside and Ratliff shot blocking inside... holding opponents to 84.4 points per game... 79.0 last three games.
2. Limiting opponent's shooting accuracy... opponents shooting under 40% from field... five times this season have held opponents under 35%... not allowing 2nd efforts has a lot to do with the low shooting percentages.
3. Defensive pressure ball... lead NBA in steals (12 spg)... Lynch leads NBA with 2.57 spg... Iverson #3... Snow #16. Snow and Lynch play passing lanes well and need to be occupied on weakside.
4. Mid and side Screen Rolls, show and recover hard... no traps.
5. Bigs play behind or 3/4 on posts while smalls front. Portland successfully posted Snow and Hughes on weakside reversals and lob feeds.
6. Presses: played full court man without trapping at end of game.

NBA RANKINGS

Scoring: 14th (90.8)

Field Goal %: 17th (43%)

3 Pt Field Goal %: 26th (29%)

Free Throw Percentage: 17th (72%)

Offensive Rebounding: 3rd (15.2)

Assists: 26th (18.6)

Turnovers: 25th (17.0)

Points Allowed: 5th (85.7)

Opponent FG %: 7th (41%)

Defensive Rebounding: 15th (29.0)

Blocks: 8th (6.1)

Steals: 1st (11.9)

TO forced: 1st (19.0)

Fouls: 20th (24)

3/21/1999

Philadelphia Sixers

PLAYER RANKINGS

Depth Chart			
PG	Eric Snow	Allen Iverson	Aaron McKie
SG	Allen Iverson	Larry Hughes	
SF	George Lynch	Tyrone Hill	Jerald Honeycutt
PF	Theo Ratliff	Rick Mahorn	
C	Matt Geiger	Harvey Grant	Nazr Mohammed

Injured Reserve: Casey Shaw, Anthony Parker, Darin Hancock

Leading Scorers:

Iverson (28.6), Geiger (12.0), Ratliff (11.0), Lynch (9.7)

Red Flag Shooters:

Iverson (29.5%), Hughes (23.1%), Lynch (23.1%)

Best Free Throw Shooters:

Geiger (85.7%), Iverson (76.7%), Ratliff (74.0%)

Foul for Profit:

Hughes (54.5%), Hill (58.4%), McKie (58.8%), Lynch (65.2%)

Best Post up Players:

Geiger, Hill, Mahorn

Best Creative One on One Players:

Iverson, Hughes

Best Offensive Rebounders:

Ratliff (3.2), Hill (3.1), Geiger (2.8), Lynch (2.8)

Most Assists:

Iverson (5.4), Snow (5.1), Lynch (2.1), McKie

Most Turnovers:

Iverson, Snow, Lynch

Best Defensive Players:

Snow, Lynch, Ratliff (shot blocking), Iverson (hands)

Weakest Defensive Players:

All pretty good

Best Defensive Rebounders:

Ratliff (5.4), Lynch (4.9), Hill (4.9), Geiger (4.1), Iverson (4.0)

Shot Blockers:

Ratliff (3.2), Geiger (0.9), Grant

Steals:

Lynch (2.7), Iverson (2.6), Snow (2.1)



STRENGTHS

1. Total defensive effort...one of the best in the NBA...Iverson quick hands outside and Ratliff shot blocking inside.
2. Defensive rebounding...limiting opponent's shot attempts and second efforts...currently have four (4) players ranked in top 40 rebounders in NBA
3. Defensive pressure...lead NBA in steals...average 12 spg ...holding opponents shooting under 40% from field.
4. Running game ...have outscored opposition 226 (18.8 ppg) to 125 margin on fast breaks.
5. Iverson's scoring ability...leads NBA...averaging 28.1 ppg...has "green light averaging 23+ shots per game.
6. SHOT BLOCKING...averaging 6.4 bpg...registered 10 or more blocks 6X...Ratliff's career high of 68 straight games with blocks.
7. Excellent team chemistry...only NBA team to use the same starting lineup (Snow, Iverson, Lynch, Ratliff and Gieger) for all played.

WEAKNESS

1. Execution down stretch...have lost three games when opponent's have hit winning shots with less than two seconds...including Darrell Armstrong's steal and layup at buzzer off Lynch's inbound pass giving the Magic one point victory.
2. Three point shooting...shooting only 28.6 %...not taking a lot of three point shots...154 attempts to opponents 307 (Iverson 26/88, Hughes 66/26, Lynch 4/11, McKie 1/5)
3. Lack of depth ... mainly playing seven to eight players...Iverson (41 mins), Lynch 34 mins), Snow (34 mins), Ratliff (33 mins), Gieger (30 mins), Hill (30 mins)...Grant (20 min), McKie (15 min). May contribute to inability to execute at end of game.
4. Ball handling suspect.



MUSTS TO WIN

1. Limit their early offense...get back quickly and find men on defensive transition...no easy baskets! Sprint back...seek the level of the ball... “Wolf” (persue from behind and knock ball loose – “RBP”). Their transition game is keyed by the steals and dominance on the defensive boards.
2. Take care of the ball offensively. Maintain good floor spacing and eliminate the dribble... expect strong on ball pressure...use sharp, accurate passes...beware of Iverson, Snows, and Lynch’s abilities to anticipate passes and quick hands.
3. Second efforts. Get inside on offensive boards and rebound offensively...war on the boards!...not going to win if only get one shot.
4. Deny Iverson the ball. Limit his touches and shots...box him into a corner...make him a passer by denying outlet passes and inbounds passes to Snow (face?) and force Iverson to come back and bring ball up the court.
5. Must defend base screens (power) and side Screen/Roll...deny screen by pushing and forcing screener out and making Iverson shoot longer shots...Iverson likes to pull up or reverse using a quick cross over or behind the back dribble to pull up jumpers on screens.
6. Take away inside game and force them to shoot outside shots. Play a shell defense. Zone off Snow and try to Iverson into the middle. He is very quick and effective going baseline.
7. Selective pushes...take sures, not there make them defend side to side...look for backcuts and isolations.
8. Play with finesse and agility...DO NOT get into a physical game...“Muggers”...force them to match up against quickness.

3/21/99

PHILADELPHIA SIXERS PERSONNEL

STARTERS

20 SNOW, ERIC: 6'3" 204# Point Guard

His game is to distribute the ball...quick first step...pushes ball well and can make the play on the fast break...runs offense...makes good decisions...good off screen & rolls...average medium range shooter...poor free throw shooter...takes care of the ball offensively and does not turn it over...not a great penetrator. Has quick hands and feet on defense...among NBA leaders in steals...pressures the ball hard...solid defender.

Pressure hard...push to left...deny inbound pass (make Iverson bring ball up)...zone off ball and help...force but pressure 3's...trap at half court...post up defensively.

	Mins	FG	FT	3FG	Assists	TO's	Steals	Rebs	Blks	Points
Career	14.5	43%	68%	21%	2.7		0.9	1.4		3.5
Current	34.5	42%	68%	50%	5.1		2.1	3.5	0	7.5
Last Game	35	1/6	0/0	0/0	3	5	2	1	0	2

3 IVERSON, ALLEN: 6'0" 165# Off Guard

Great athlete with excellent speed and quickness...prolific scorer (leads NBA)...will take it coast to coast...very quick with ball and has a great crossover move. Really gets out into a lane on transition...no fear going to rim...explosive jumper who can power dunk...looks to score, but will find open man on penetrations...will lob pass to Hughes for dunks in transition. Can catch & shoot or shoot off dribble to 3 point range...can drive left and dunk left handed. Could be a very good defender, but reaches and gets beat off the dribble at times or fouls.

Deny him the ball and limit shots...lock him up into corner...find in transition...box out (no second efforts)...make him work defensively

	Mins	FG	FT	3FG	Assists	TO's	Steals	Rebs	Blks	Points
Career	40	44%	73%	32%	6.6		2.2	4.1	0.3	23.5
Current	41	42%	77%	30%	5.4		2.6	5.7	0.3	28.6
Last Game	37	8/21	8/10	0/7	5	4	2	2	0	24

9 LYNCH, GEORGE: 6'8" 228# Small Forward

Signed as free agent (Vancouver)...fits in well as an unselfish role player...runs floor fairly well...scores mostly on transitions and on the offensive boards...limited range on jump shot...poor free throw shooter. Very active defensively and traps the ball well...hard worker at both ends of floor...great anticipation and hands on defense...leads NBA in steals...having a great year rebounding.

Find on transition...box out physically...keep him off the offensive boards...protect the ball offensively.

	Mins	FG	FT	3FG	Assists	TO's	Steals	Rebs	Blks	Points
Career	20	48%	66%	25%	1.3		1.1	4.6	0.3	7.1
Current	34	44%	65%	36%	2.1		2.7	7.7	0.4	9.7
Last Game	30	2/10	0/0	0/1	3	0	0	10	0	4

42 RATLIFF, THEO: 6'10" 225# Power Forward

Lanky, agile and quick...plays with finesse not strength...limited offense...scores mainly on rebound shots and putbacks...uses a short jump hook inside. Big time rebounder at both ends. Leading NBA shot blocker...closes down middle with shot blocking (career high of 68 consecutive games with blocks) and is hub of Sixers defense.

Pull him out away from basket defensively...box out physically.

	Mins	FG	FT	3FG	Assists	TO's	Steals	Rebs	Blks	Points
Career	23	51%	71%		0.4		0.5	5.1	2.2	7.2
Current	33	44%	74%		0.4		1.1	8.6	3.2	11.0
Last Game	30	2/6	0/0	2/2	0	2	1	10	1	6

52 GEIGER, MATT: 7'1" 248# CENTER

Tough, very aggressive and physical...constantly banging...runs well...can post up at both blocks using turnaround jumper...nice touch from 18-20' and will hit open shot...good offensive rebounder...keeps the ball alive...sets hard screens.

Box him out...keep him off the boards...make him put the ball on the floor offensively...no open shots.

	Mins	FG	FT	3FG	Assists	TO's	Steals	Rebs	Blks	Points
Career	22	52%	72%	26%	0.7		0.6	5.8	0.7	9.1
Current	30	46%	86%		0.9		1.0	6.9	0.9	12.0
Last Game	31	8/15	3/3	0/1	0	2	1	5	0	19

3/21/99

PHILADELPHIA SIXERS PERSONNEL

BENCH

40 HILL, TYRONE: 6'9" 250# PF

Ferocious rebounder at both ends...strong body...plays physically and moves without the ball...can make 10-12' jumper. Posts up strong...on left block, backs man down into lane for right hand jump hook or turnaround jumper spinning toward baseline. Tip dunks on offensive end...not a good free throw shooter. Solid defender...tendency to foul easily. 1995 NBA all star averaged 8.6 points and 7.9 rebounds as starter with Bucks this season.

All inside...pull outside and drive...keep off the boards...boxed out physically

	Mins	FG	FT	3FG	Assists	TO's	Steals	Rebs	Blks	Points
Career	28	52%	64%		0.8		0.8	8.6	0.5	9.6
Current	30	43%	58%		0.9		1.0	8.0	0.5	8.9
Last Game	31	2/6	1/2	0/0	0	2	1	10	1	5

8 McKIE, AARON: 6'5" 209# G

Shooter...plays 2 or 3...very aggressive offensively...always looking for a way to get a shot...runs court well and is crafty in getting to rim...shoots better from 3 point range than 2 point range, but is inconsistent...wants to drive right...when he goes left will spin back to right to finish. Not a good ball handler or passer. Average defender and adequate rebounder.

Pressure outside shots...although a big guard, he can be posted.

	Mins	FG	FT	3FG	Assists	TO's	Steals	Rebs	Blks	Points
Career	22	43%	76%	33%	2.1		1.0	3.0	0.2	6.4
Current	15	40%	59%	20%	1.7		0.9	2.4	0.1	3
Last Game	21	5/8	0/0	0/0	1	1	1	3	0	10

21 HUGHES, LARRY: 6'5" 185# SG

Eighth overall selection of 1998 NBA draft...leading scorer off the bench. Runs the floor well...likes to finish with acrobatic plays and slam dunks (from Iverson)...poor free throw shooter...will rebound at both ends.

Find in transition...no easy shots...box out...force him to take outside shots.

	Mins	FG	FT	3FG	Assists	TO's	Steals	Rebs	Blks	Points
Career	Rookie									
Current	19	40%	55%	23%	1.5		0.7	3.4	0.3	8.4
Last Game	18	1/9	3/4	0/2	1	0	0	5	0	5

3/21/99

PHILADELPHIA SIXERS PERSONNEL con't.

44 GRANT, HARVEY: 6'9" 248# C

Good athlete who runs the court and finishes...likes to power dunk on break...streaky shooter from wings and baseline...catch & face up to 17'...can hit open shot from top of circle...will post up but does not have great moves. Does not drive much, but can go either way...not a strong ball handler...turnover prone. Plays hard but is weak defender when guarding the ball or post. Very good free throw shooter...good offensive rebounder.

Get into chest on face up shots forcing left...keep off the boards...box out.

	Mins	FG	FT	3FG	Assists	TO's	Steals	Rebs	Blks	Points
Career	27	47%	71%	27%	1.6		0.8	4.5	0.6	10.2
Current	20	42%	75%	50%	0.5		0.6	2.3	0.7	3.9
Last Game	5	0/0	0/0	0/0	0	0	0	1	0	0

25 HONEYCUTT, JERALD: 6'9" 254# F

Talented player that plays with questionable intensity...non worker...runs floor and finishes...can drive right and takes it strong to the basket...likes to play on perimeter when he should be playing inside...can catch & shoot to 18'...streak 3 point shooter...good passer but careless at times...can rebound. Not a strong defender.

Pressure hard and go at him offensively (lazy D).

	Mins	FG	FT	3FG	Assists	TO's	Steals	Rebs	Blks	Points
Career	13	40%	62%	36%	0.8		0.5	2.2	0.2	6.0
Current	4	29%	50%	0%	0		0.3	0.3	0.3	1.3
Last Game	DNP									

4 MAHORN, RICK: 6'10" 260# F

Role player...an original "ENFORCER"...still a strong, physical banger inside...solid defensive rebounder...defends the post well, but can't defend on the perimeter. He can make open jumpers to 15'...tries to back you down in the low post and turns left for a right hand jump hook. 71% free throw shooter...will play 3-4 minutes using his fouls!

Run on him...force him outside and isolate on perimeter....box out!

	Mins	FG	FT	3FG	Assists	TO's	Steals	Rebs	Blks	Points
Career	23	49%	71%	13%	1		0.6	6.3	0.9	7.0
Current	5	14%			0.2		0.3	0.7	0	0.3
Last Game	DNP									

14 MOHAMMED, NAZR: 6'10" 220# C

Early entry into draft...29th pick...good size...high percentage rebounder around basket...rebounder

Averaged 12.0 ppg and 7.2 rpg at Kentucky last year...can block shots...garbage time player.

	Mins	FG	FT	3FG	Assists	TO's	Steals	Rebs	Blks	Points
Career	Rookie									
Current	5	44%	60%	0%	0.2		0.2	1.5	0.2	2.4
Last Game	2	0/1	0/0	0/0	0	1	0	1	0	0

Calls

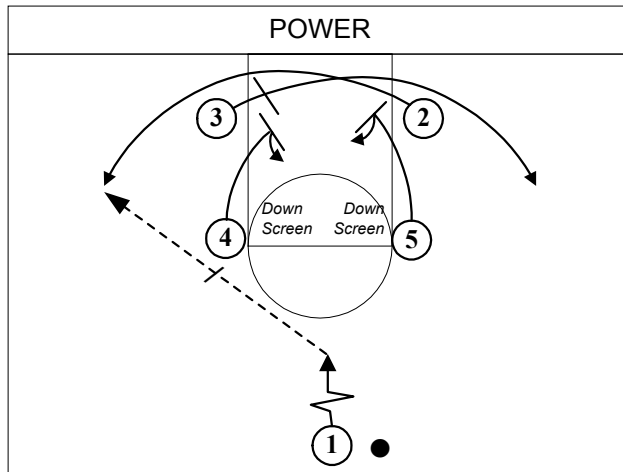
Most Used

Scenario

Frequency

#3 ↓

Fist: O2 & O5 Side Screen/Roll on break downs

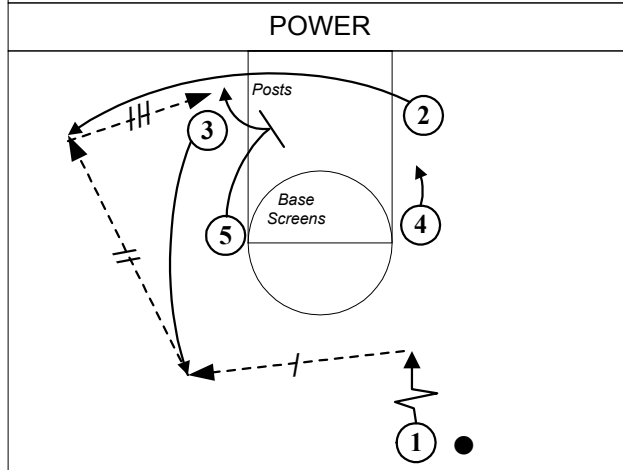


Suggest: Zone Snow & push Iverson into middle. Shell defense.

15

#3 →

O3 pops out. Look to post O5.

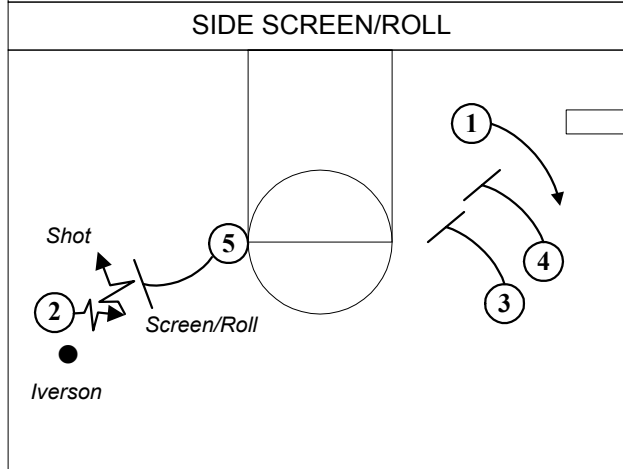


4

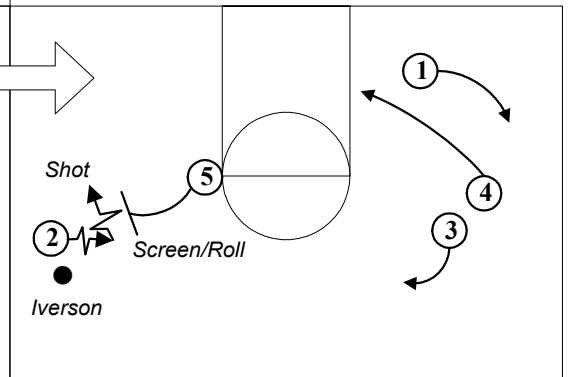
1 ↓

Iverson will pull up and shoot off quick cross over or behind back move.

Will either double screen on weakside or form a triangle on weakside with O4 posting.

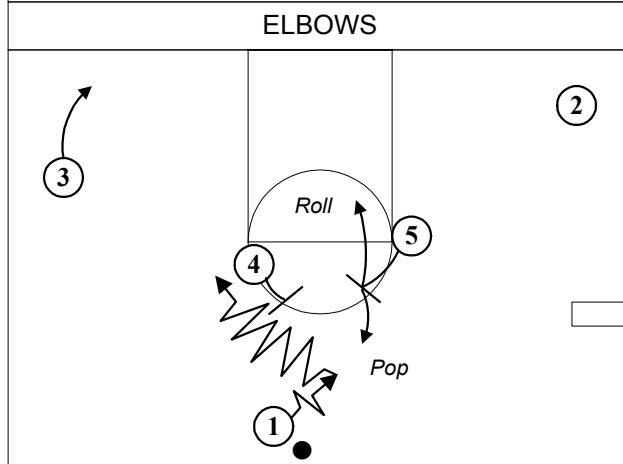


6

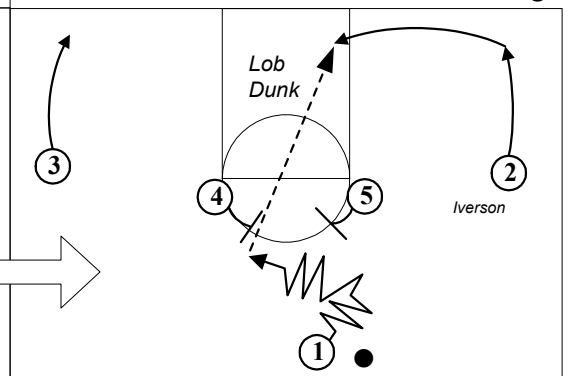


"C 5"

Weakside post will pop (52) or roll (42)



5



SIXERS 1A

Calls

Less Used

Scenario

Frequency

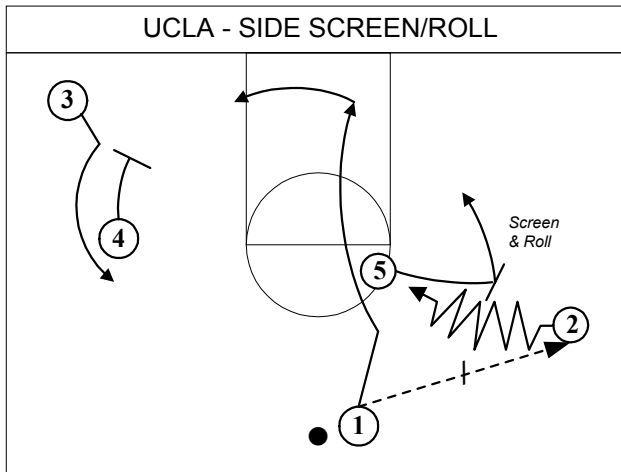
#2 ↑ Right

UCLA - SIDE SCREEN/ROLL

2

#2 ↓ Left

Option 1: O3 passes to O2 and rub cuts off O5.
Option 2: Fist: O2 & O5 side Screen/Roll



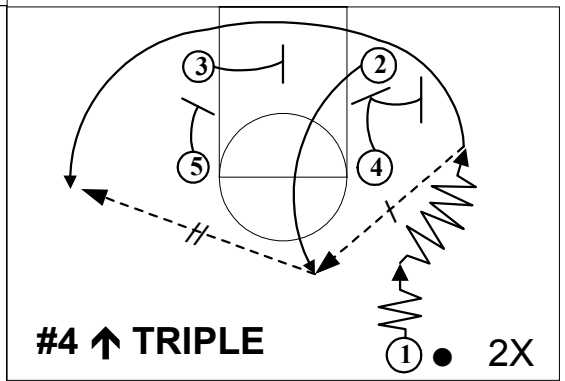
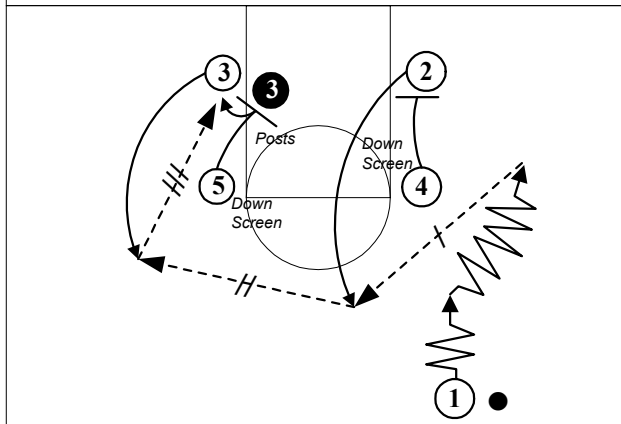
#4 ↑ Right

ZIPPER

7

#4 ↓ Left

O2/O4 Screen/Roll

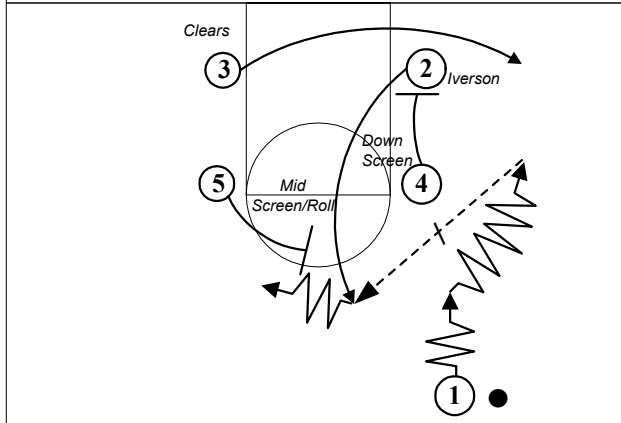


#4 ↑ Right

ZIPPER - PICK

3

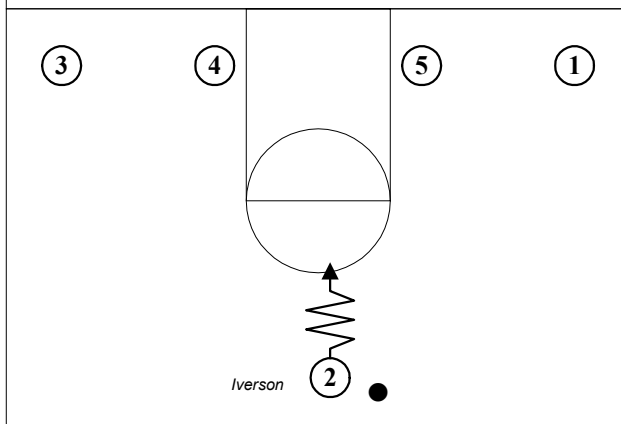
Mid Screen/Roll
Iverson jumper



"24 FLAT"

FOUR LOW

1



Calls

Less Used

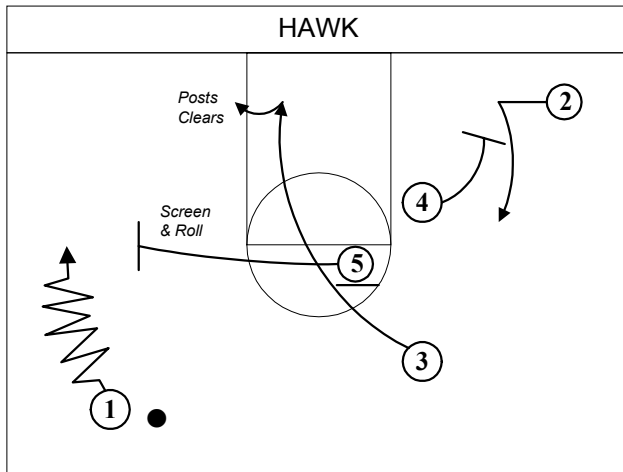
Scenario

Frequency

"5"

5

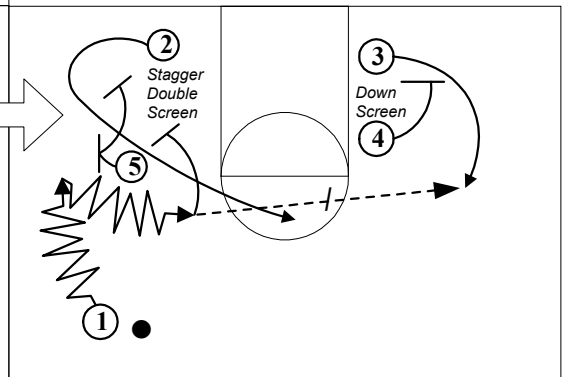
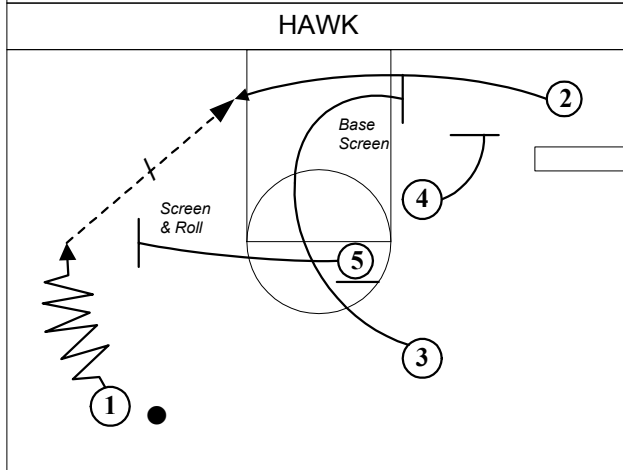
Option 1: O3 passes to O2 and rub cuts off O5.
Option 2: Fist: O2 & O5 side Screen/Roll



5 ↓ Left

2

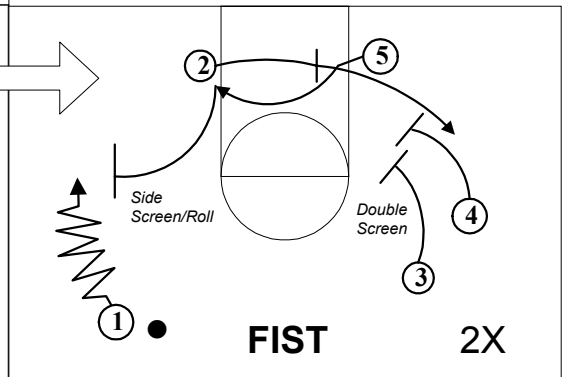
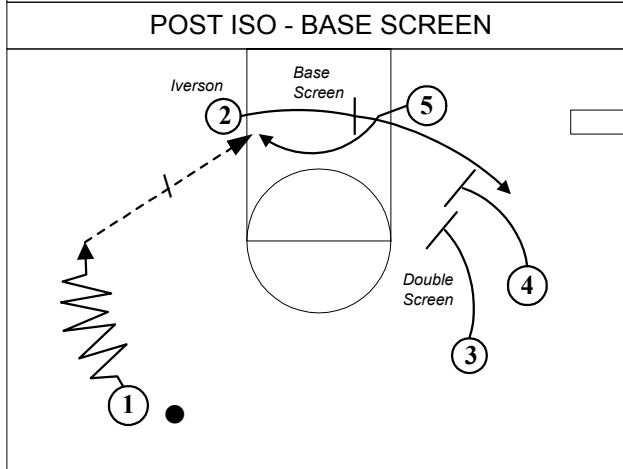
O2/O4 Screen/Roll



"CROSS 5"

4

Base screen to weakside double.



"CROSS 52"

1

